

# Specifications

## FOUNDATION

Earthquake resistant (as per Zone II specifications)  
RCC frames structure

## WALLS

Aerocon Blocks in cement Mortar with 9" external walls and 4.5" Internal walls

## WINDOWS

UPVC of reputed make with protective grills

## TOILETS

Glazed ceramic tile dado up to Lintel Level. Sanitary ware of ROCA/ Equivalent make for all bathroom. All C.P fittings are chrome plated of jaguar or equivalent make for all bathrooms

## PAINTING

Interiors: Smooth finish with Birla putty with 2 coats of Acrylic emulsion paint  
Exterior: Textured paints & Cladding as per architects Specifications

## PLASTERING

Two coats, sponge finish

## KITCHEN

Polished granite top cooking platform with stainless steel sink. Provision for exhaust fan, water filter and chimney. Glazed ceramic tile dado up Lintel Level, above kitchen platform

## COMMUNICATION SYSTEMS

Telephone points and TV points in all the rooms. Intercom connection between all the flats, security and watchman room

## FLOORING

Good Quality marble slabs in living and dining rooms  
Superior quality vitrified tiles in bedrooms.  
Laminated Wooden flooring in Master Bedroom

## DOORS

Frames : All door frames with teak  
Main Door : Paneled teak wood shutter with quality fittings and locks with both sides polish  
Internal Doors: OST panel shutter with one side polish

## ELECTRICAL

Concealed internal wiring with Finolex insulated copper wires for all points. Best quality modular type switches and sockets of Legr and or equivalent make. Adequate number of Power Points in every room considering interior layouts. Separate metering for power for each house for normal supply

## LIFT

6 Passenger lift 1nos with V3F (OTIS/KONE/similar make)

## BACKUP-GENERATOR

Complete backup except 15Amps power points

## Roof Garden & GYM

Roof garden will be landscaped on the top floor with a gym as per the architects specifications

## Car Parking

2 No's car parking will be provided to each apartment

## Kids Play Area

An area is allotted behind the apartment which would be landscaped and made attractive for children to play



## Location Map



## Completed Projects



More....



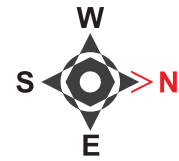
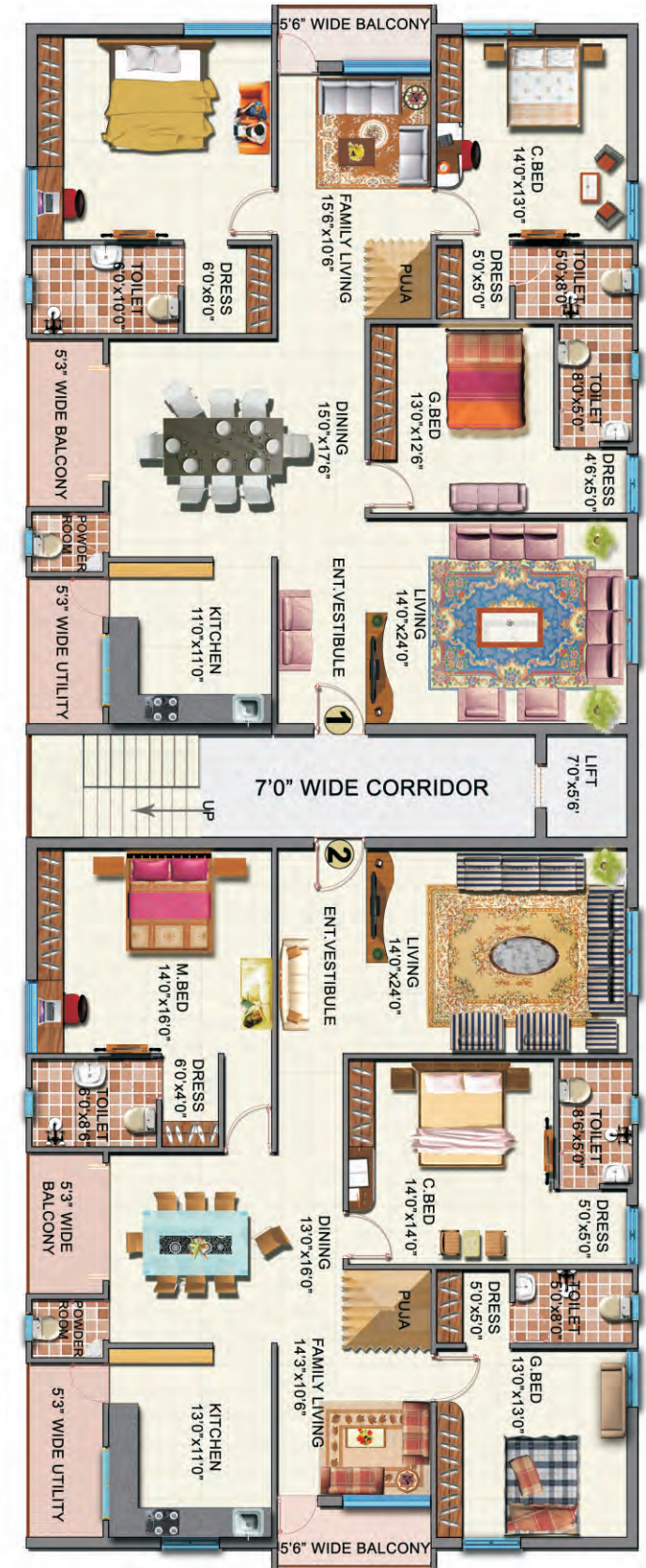
Add **colour** to Your Dream..



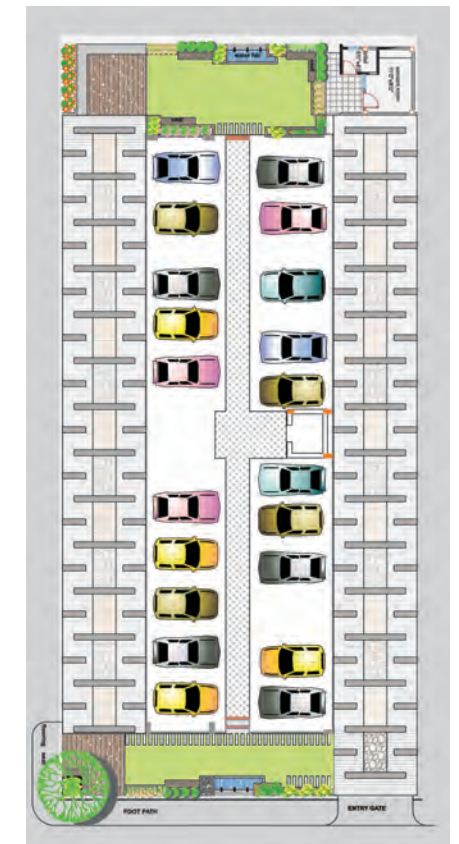
**SAISHAKTI PROJECT PVT.LTD**  
Flat No.104, Sai Sri Apartments, Camelot Layout, Near Chirec Public School, Kondapur, Hyderabad-500084

Contact  
Ph : 91-40-4025 0259      Mob : +91-77999 582 59      Fax : 040-4025 0259  
Email : info@ssinfra.net      Web : www.ssinfra.net

# Typical Floor Plan



## Car Parking



*Sai Shakti's  
Bhaskara  
Signature*

Flat No.	Area(Sft)	Face
1	2532	E
2	2532	W



## Terrace Floor Plan

